

Little Giant[®] Ladder Systems

“The Strongest, Safest, Most Versatile Ladder System in the World”™



JIA YING TRADING PTE LTD

1 Rochor Canal Road #02-67 Sim Lim Square
Tel: 63360404 Email: jjaying@singnet.com.sg
www.jiaying.com



LADDERS & HARDWARE PTE LTD

1 Rochor Canal Road #02-37 Sim Lim Square S(188504)
Tel: 63360404 Email: email@laddersandhardware.com
www.laddersandhardware.com

Articulating Ladders

Multi-use ladders that transform from an A-frame to Extension (straight ladder), Staircase, 90-degrees and Scaffolding ladder – all in multiple heights.

One ladder, multiple configurations



- Safe and easy** to use on **stairs, uneven surfaces** and over obstacles in **staircase position**
- 90 degrees** position to work **close to walls**
- Extension** (straight) ladder position to reach high work areas
- Forms two trestles for **scaffolding** (optional telescoping plank available for purchase separately)
- Aerospace grade aluminium** for maximum stability & durability
- New black resin fiberglass composite is **lighter, stronger, and easier to use** (Dark Horse model)
- Move from place to place easily with **Tip & Glide wheels***
- Wide-flared base** provides unmatched feeling of stability
- Reduce clutter and save space with **small storage profile**



Revolution XE

- Quad-Lock™** hinges for maximum strength, stability and versatility
- Rock Locks™** - easier & user-friendly ladder adjustment
- Metal trestle brackets** converts ladder into a scaffolding system
- Built-in **Ratchet Levelers** for working on uneven terrains

Xtreme

- Quad-Lock™** hinges for maximum strength, stability and versatility
- Rock Locks™** - easier & user-friendly ladder adjustment
- Metal trestle brackets** converts ladder into a scaffolding system
- Built-in **Ratchet Levelers** for working on uneven terrains (model 17 & 22)
- Comfort Step™** provides spacious standing surface at any height
- AirDeck™** workstation as safety handrail

Dark Horse

- Work safely in industrial applications with **fade-resistant, non-conductive black-resin fiberglass** ladder
- New black-resin fiberglass composite is **lighter, stronger and easier to use** than any other fiberglass articulating ladder
- Wide-flared base** provides much more **lateral stability** than straight-sided step or extension ladders, preventing many accidents caused by over-reaching

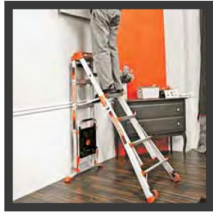
Model	Ratchet leveler	Weight capacity ¹	A-frame height ⁴		Extension height ⁴		Scaffolding height ⁴		Storage height ⁴	Width at base ⁴	Ladder weight
			feet	meters	feet	meters	feet	meters			
Revolution XE - Aluminium multi-use ladder with quad lock hinges, rock locks, metal trestle brackets, and ratchet levelers											
Revolution XE 17	Yes	136kg ¹	4'-7'	1.2-2.1m	9'-15'	2.7-4.5m	4'	1.2m	1.4m (4'7")	59cm	17kg
Revolution XE 22	Yes	136kg ¹	5'-9'	1.5-2.7m	11'-19'	3.3-5.7m	5'	1.5m	1.7m (5'7")	68cm	20kg
Revolution XE 26	Yes	136kg ¹	6'-11'	1.8-3.3m	13'-23'	3.9-7.0m	6'	1.8m	2.1m (6'7")	79cm	26kg
Xtreme - Aluminium multi-use ladder with quad-lock hinges, rock locks, metal trestle brackets, comfort step, AirDeck, and ratchet levelers (17, 22)											
Xtreme 17	Yes	136kg ¹	4'-7'	1.2-2.1m	9'-15'	2.7-4.5m	4'	1.2m	1.4m (4'7")	63cm	18kg
Xtreme 22	Yes	136kg ¹	5'-9'	1.5-2.7m	11'-19'	3.3-5.7m	5'	1.5m	1.7m (5'7")	68cm	21kg
Xtreme 26	No	136kg ¹	6'-11'	1.8-3.3m	13'-23'	3.9-7.0m	6'	1.8m	2.1m (6'7")	79cm	24kg
Dark Horse - Fiberglass multi-use ladder in lighter and stronger black-resin non-conductive fiberglass											
Dark Horse 13	No	170kg ²	3'-5'	0.9-1.5m	7'-11'	2.1-3.3m	3'	0.9m	1.1m (3'7")	74cm	13.6kg
Dark Horse 17	No	136kg ¹	4'-7'	1.2-2.1m	9'-15'	2.7-4.5m	4'	1.2m	1.4m (4'7")	74cm	17.7kg
Dark Horse 22	No	136kg ¹	5'-9'	1.5-2.7m	11'-19'	3.3-5.7m	5'	1.5m	1.7m (5'7")	74cm	20.9kg

A-Frame Step Ladders

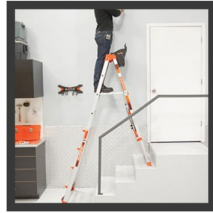
Work easily, confidently, comfortably and safely on uneven terrain.

Select Step

Aluminium A-frame step ladder with vertical height and ladder angle adjustments



Use the **90 degrees position** for walls and tight corners



Safe to use on stairs or uneven surfaces



Comfortable standing platform - feels like standing on solid ground



Tip & Glide wheels allow you to **wheel the ladder easily** from job to job

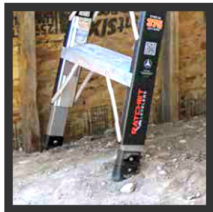


Detachable **AirDeck** as **workstation** and **safety handrail**

Model	Weight capacity ¹	Min. A-frame height ⁴	Max. A-frame height ⁴	Storage height ⁴	Width at base ⁴	Ladder weight ⁴
Select Step 5-8	136kg ¹	1.52m (5')	2.43m (8')	1.55m (5' 1")	69cm (27")	14.1kg
Select Step 6-10	136kg ¹	1.82m (6')	3.04m (10')	1.86m (6' 1")	83cm (32.5")	17kg

Safe Frame

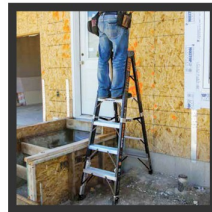
Fiberglass A-frame step ladder with ratchet levelers to work on uneven terrain



Built-in quad ratchet levelers for **working on uneven grounds**



Ground Cue™ with **audible and physical notification** of last step



Removal of top rung enforces working at safe position



Wide, comfortable rungs reduce foot fatigue and improve stability



Type 1AA 375lbs **Non-conductive fiberglass** construction

Model	Ratchet levelers	Weight capacity ¹	Highest standing level	Storage height ⁴	Storage depth ⁴	Base footprint ⁴	Width at base ⁴	Ladder weight ⁴
Safe Frame 8'	Yes	170kg ²	1.82m (6')	2.43m (8')	16cm (6.25")	1.31m (51.25")	63cm (24.75")	18kg
Safe Frame 10'	Yes	170kg ²	2.43m (8')	3.04m (10')	16cm (6.25")	1.59m (62.25")	70cm (27.25")	22kg
Safe Frame 12'	Yes	170kg ²	3.04m (10')	3.65m (12')	16cm (6.25")	1.86m (73.25")	76cm (29.75")	26kg

Telescoping Aluminium A-frame multi-use ladder

Reach into high places where normal ladders cannot access, even on uneven terrains.

SkyScrapper MXZ

Extra-tall to reach high places, on uneven grounds like staircases or around furniture



SkyScrapper (MXZ)

Telescoping A-frame with spring-assisted hinges let you go where much more expensive powerlifts can't go

Extra wide flared legs provide superior stability at extreme heights

Safe and easy to use on stairs, stadium seating, stages and other uneven surfaces



Model	Weight capacity ¹	A-frame height ⁴	Storage height ⁴	Width at base ⁴	Ladder weight
SkyScrapper model 15	136kg ¹	2.4-4.5m (8'-15')	2.6m (8'7")	94cm (37")	27.3kg
SkyScrapper model 17	136kg ¹	2.7-5.1m (9'-17')	2.9m (9'7")	94cm (37")	35.9kg

Step Stool

Safety Step

Extra large slip-resistant steps, Tip & Glide wheels and a safety bar for maximum stability



2 steps

3 steps

4 steps

5 steps

All models come with a work tray & safety bar that can be folded down. Tip & Glide wheels makes it easy to move ladder between tasks.



Safe, slip-resistant extra large steps imitate a normal stairway to ensure maximum stability



Convenient work tray holds ample work tools and to hang buckets or paint cans



Slim folded depth makes it easily transported / stored. Easy to move around with Tip & Glide wheels.

Model	Weight capacity ¹	Highest standing level ⁴	Storage height ⁴	Storage depth ⁴	Width at base ⁴	Ladder weight
Safety Step 2-steps with bar	136kg ¹	45cm (18")	81cm (31.5")	13cm (5")	56cm (22")	7.1kg
Safety Step 3-steps with bar	136kg ¹	66cm (26.5")	110cm (43")	13cm (5")	56cm (22")	9.8kg
Safety Step 4-steps with bar	136kg ¹	89cm (35")	140cm (55")	13cm (5")	56cm (22")	12.5kg
Safety Step 5-steps with bar	136kg ¹	114cm (45")	173cm (68")	13cm (5")	56cm (22")	16.7kg

Little Giant Ladder Accessories



Cargo Hold
Tool pouch



Fuel Tank
Vertical Paint tray



Rack
Wall-mounted rack



Work Platform
Standing platform



Leg Leveler
For uneven surfaces



Wingspan
Wall standoff



Telescoping Plank
8-13ft / 10-16ft

Accessories Compatibility Chart

	Aluminium 1A	Revolution XE	Xtreme	SkyScraper MXZ	Dark Horse	Select Step
Cargo Hold	•	•	•	•	•	
Fuel Tank	•	•	•	•	•	•
Rack	•	•	•		•	•
Work Platform¹	•	•	•	•	•	
Leg Leveler¹	•	•	•	•		
Wingspan	•	•	•		•	
Telescoping Plank³	•	•	•		•	
Air Deck (supplied with ladder)			•			•

About Little Giant Ladder Systems

Preventing injuries, saving lives

Since its inception in the 1970s in the USA, Little Giant Ladder Systems has followed the guiding principle that every rung, every rivet, and every weld matters, because every person matters. It strives to design and refine safety equipment that prevent injuries and save lives.

Little Giant Ladder Systems continues to invest heavily in research and development, and has partnered with safety professionals all over USA to develop real solutions to real safety problems. Today, it is the safety and innovation leader in climbing systems and professional access equipment.